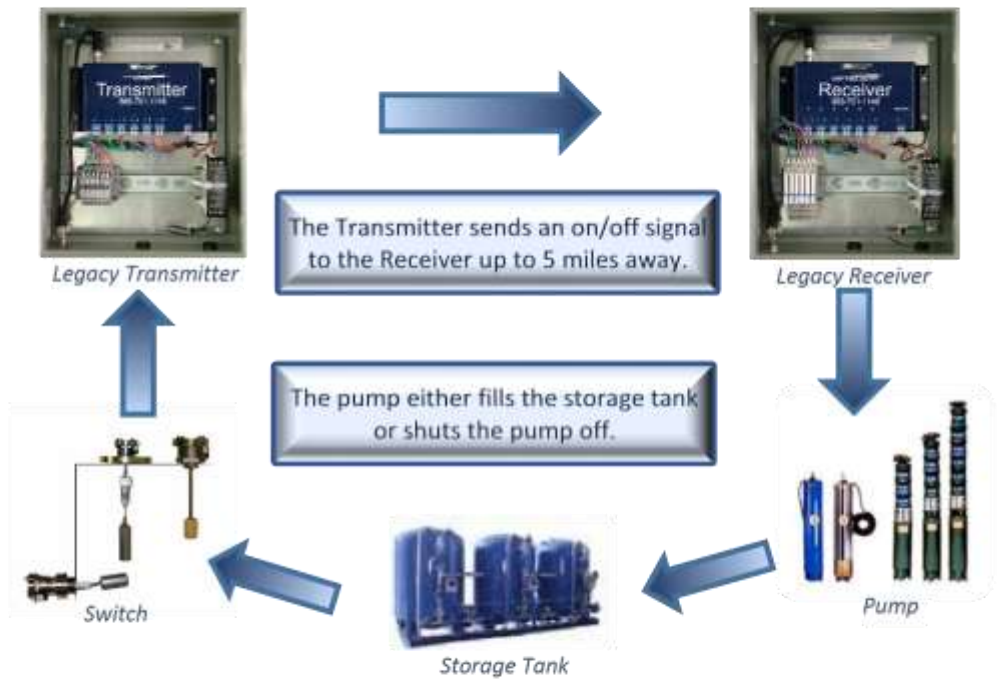


Short, Medium and Long Range Legacy Systems

Applications Include:

- ❖ Pump / Tank Control
- ❖ Valve Actuation
- ❖ Conveyor Control
- ❖ Grain Augers
- ❖ Light Control
- ❖ Stackers
- ❖ PLC Activation
- ❖ Engine Control
- ❖ Wireless Automation
- ❖ Infrared Landing Systems
- ❖ Motion Detection
- ❖ Control Panels
- ❖ Manual Switches
- ❖ General Purpose Relays
- ❖ Tactical Landing Lights
- ❖ Perimeter Security
- ❖ Strobe Lights
- ❖ Alarm Sirens
- ❖ Target Controls
- ❖ Gates



"Just wanted to say thank you! Our medium range unit went in without issue. We had to call tech services as this was the 1st time we ever installed this type of controller, and they were spot on. I wish every project was this straight forward!"

Robert S.
General Manager, Cobb Area Water District

"For years, Nissan's Styling Staff had to work with wireless remote turntable systems supplied by the OEM, all of which had quality and reliability issues. With one contact to Remote Control Technology, we were able to make all the issues with our turntable wireless systems disappear. The pricing was very competitive and the customer support was excellent.

I would recommend this supplier to anyone."

Mario P.
Nissan Technical Center



Remote Control Technology
14736 NE 95th Street
Redmond, WA 98052

sales@remotecontroltech.com
425.216.7555 Phone
425.216.7558 Fax

Long Range Legacy System – Part # 01210

6 Dry Contact Input Transmitter Specifications			6 Relay Output Receiver Specifications		
Transmitter Part # 01217 Includes: <ul style="list-style-type: none"> • 6 input, 4 Watt transmitter • 15 Watt power supply • (110 to 240 VAC input, VDC output) • NEMA 4X Enclosure (10 x 8 x 4) • 42" high-gain antenna • Right-Angle Mount • 25' coaxial cable w/BNC connectors 	Power Requirements Supply Power: 12 VDC (15 Watt power supply included) XMIT Current: 200mA STBY Current: 35mA	Output: 4 Watts (5 mile* potential range) Frequency: 26.995 FM Format: PDTFM FSK FCC Part 95 Subpart E compliance (no license required)	Receiver Part # 01216 Includes: <ul style="list-style-type: none"> • 6 output receiver • 15 Watt power supply • (110 to 240 VAC input, 12 VDC output) • NEMA 4X Enclosure (10 x 8 x 4) • 42" high-gain antenna • Right-Angle Mount • 25' coaxial cable w/BNC connectors • 6 Class C Relays Rated 6A @ 250V 	Power Requirements Supply Power: 12 VDC (15 Watt power supply included) Output Current: 1 amp per output STBY Current: 45mA	Frequency: 26.995 MHz FM superheterodyne FM receiver FCC Part 15 Compliance (no license required)
	Radio	Radio			

Medium Legacy System – Part # 01240

2 Dry Contact Input Transmitter Specifications			2 Relay Output Receiver Specifications		
Transmitter Part # 01242 Includes: <ul style="list-style-type: none"> • 2 input, 2 Watt transmitter • 15 Watt power supply • (110 to 240 VAC input, 12 VDC output) • NEMA 4X Enclosure (10 x 8 x 4) • 42" high-gain antenna • Right-Angle Mount • 25' coaxial cable w/BNC connectors 	Power Requirements Supply Power: 12 VDC (15 Watt power supply included) XMIT Current: 200mA STBY Current: 35mA	Output: 2 Watts (2 mile* potential range) Frequency: 26.995 FM Format: PDTFM FSK FCC Part 95 Subpart E compliance (no license required)	Receiver Part # 01241 Includes: <ul style="list-style-type: none"> • 2 output receiver • 15 Watt power supply • (110 to 240 VAC input, 12 VDC output) • NEMA 4X Enclosure (10 x 8 x 4) • 42" high-gain antenna • Right-Angle Mount • 25' coaxial cable w/BNC connectors • 2 Class C Relays Rated 6A @250V 	Power Requirements Supply Power: 12 VDC (15 Watt power supply included) Output Current: 1 amp per output STBY Current: 45mA	Frequency: 26.995 MHz FM superheterodyne FM receiver FCC Part 15 Compliance (no license required)
	Radio	Radio			

Short Range Legacy System – Part # 01245

1 or 8 Dry Contact Input Transmitter Specifications			1 or 8 Relay Output Receiver Specifications		
Transmitter Part #s: 1 Input 01247 8 Input 5810XT Includes: <ul style="list-style-type: none"> • One or eight input transmitter • 15 Watt power supply • (110 to 240 VAC input, 12 VDC output) • NEMA 4X Enclosure (10 x 8 x 4) • 42" high-gain antenna • Right-Angle Mount • 25' coaxial cable w/BNC connectors 	Power Requirements Supply Power: 12 VDC (15 Watt power supply included) XMIT Current: 300mA STBY Current: 12mA	Output: 1 Watt (1/2 mile* potential range) Frequency: 27.195 MHz FM Security: Over 4 billion digital codes FCC Part 95 Subpart compliance (no license required)	Receiver Part #s: 1 Output 01246 8 Output 5810XR Includes: <ul style="list-style-type: none"> • One or eight output receiver • 15 Watt power supply • (110 to 240 VAC input, 12 VDC output) • NEMA 4X Enclosure (10 x 8 x 4) • 42" high-gain antenna • Right-Angle Mount • 25' coaxial cable w/BNC connectors 	Power Requirements Supply Power: 12 VDC (15 Watt power supply included) Relay ON Current: 45 mA STBY Current: 10 mA	Frequency: 27.195 MHz FM Bandwidth: 25 KHz at -20dB FCC Part 15 Compliance (no license required) Relay contact rating: 5 A @ 250 VAC Relay type: SPDT Class C Mode 1: Momentary (MOM) Mode 2: Flip Flop (FF) Mode 3: Latching –On 01246 only: off Delay 1-300 sec
	Radio	Radio		Modes of Operation	
	Modes of Operation Mode 1: 2-62 second TX repeat Mode 2: 1-10 min TX repeat Mode 3: Continuous 5 min Transmit Mode 4: 1.5 sec TX burst				

Legacy System Operating Environment: Indoor or Outdoor 0°F to 122°F. For environments lower than 0°F, additional insulation and/or enclosures heaters may be required.

Solar Panel Kits: Turnkey, 12 VDC solar panel kits are available for locations without electricity.

Short, Medium, and Long-Range Legacy Systems are covered by a one-year warranty.

*The range of all radio products is dependent on local conditions and antenna selection/location.