

# Remote Control Technology

Simple Wireless Solutions

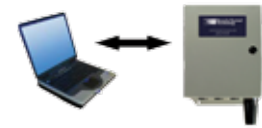
Phone: (866) 701-1146

Fax: (425) 216-7558

www.remotecontroltech.com

Applications Include:

Pumps, Valves, Relays, Conveyors, Grain Augers, Alarm Systems, PLC Activation, Stackers, Automation



## Wireless Data Controller part #: 3104

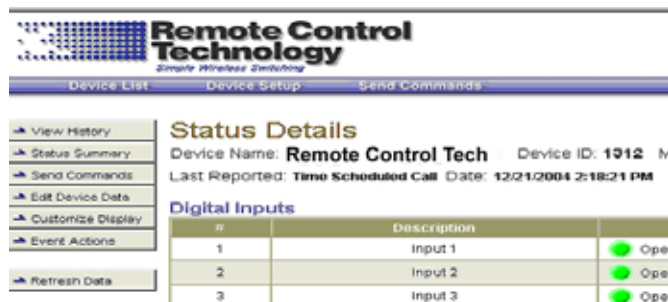
The Wireless Data Controller (WDC) is a web-to-wireless supervisory control and data acquisition (WWSCADA) device, designed to directly monitor up to 10 digital inputs, which can be dry contacts or 120 VAC inputs. The WDC can also monitor up to 3 analog inputs and has 3 remote control relays. As easy as opening a web browser, applications can be monitored in near real-time, application status can be evaluated, and if required, corrective action can be implemented. The WDC automates any application as well as sending critical status alerts to any web or text enable device such as a cell phone, PDA, laptop computer, desktop computer or pager. Maintain situational awareness with critical reports like power outage, low battery, and output status. The WDC includes an integrated cellular modem that communicates over the North American cellular data networks control channel. This MicroBurst© based radio can be installed anywhere there is analog or digital cellular coverage.

- Monitor Hardware
- Command & Control
- Emergency Notification
- Environmental Monitoring
- Ultra-Long Range Process Control
- Tank Level, Flow Rate, Temperature
- PLC Activation
- Oil Fields
- Wireless Automation

### Operation and Installation

Installation is simple; configure the inputs/outputs as required, following the installation guide, and supply power. Once power is applied, the WDC will automatically establish two-way communications over the public cellular network. Airtime billing can now be configured for monthly, bi-monthly, or annual at www.remotecontroltech.com. Simply Log onto a custom private web page to monitor your system from anywhere in the world.

**Solar Panel Kits:** Turnkey, 12 VDC solar panel kits are available for locations without electricity.



**Monitor Hardware:** View the last reported status of your equipment, temperature, pressure, fuel levels, water output and switch positions.

**Command & Control:** Send Commands to turn on pumps, shut off valves or shut down the system in near real-time. Data requires only seconds to transmit to (or from) the WDC

**Emergency Notification:** Configure selected events to trigger an immediate user notification by voice phone, pager, text messaging or e-mail.

**Customizable screen headers:** Configure the web server to reflect your industry or application with simple customization.

### Cellular Data Transceiver Specifications

|                              |   |
|------------------------------|---|
| <b>Power Requirements</b>    | Supply Power: 120VAC to 15VDC<br>Optional 12 & 24 VDC Configurations<br>0.8 Amp Hour Back-up Battery  |
| <b>Data Network</b>          | Two-Way Analog / Digital Cellular Modem<br>(Works Virtually Anywhere there is Cell Coverage in North America)<br>Transmit Power: 0.6 to 1.2 Watts<br>Frequency: 824 - 849 MHz |
| <b>Inputs / Outputs</b>      | 10 Digital (On / Off) Inputs: Dry Contact or 120 VAC<br>3 Analog Inputs: 4 to 20 mA<br>3 Relay Outputs: 8 Amps @ 250 VAC Contact Rating                                       |
| <b>Operating Environment</b> | -22 Degrees to 158 Degrees F (-30 to 70 Degrees C) NEMA 4x enclosure rating   |

Other Input / Output Configurations are available. Contact Remote Control Technology for more information



**Includes:**

- Cellular Data Transceiver
- NEMA 4x Powder-Coted Steel Enclosure
- 1 hour of custom webpage setup time to monitor inputs and control outputs through the internet